



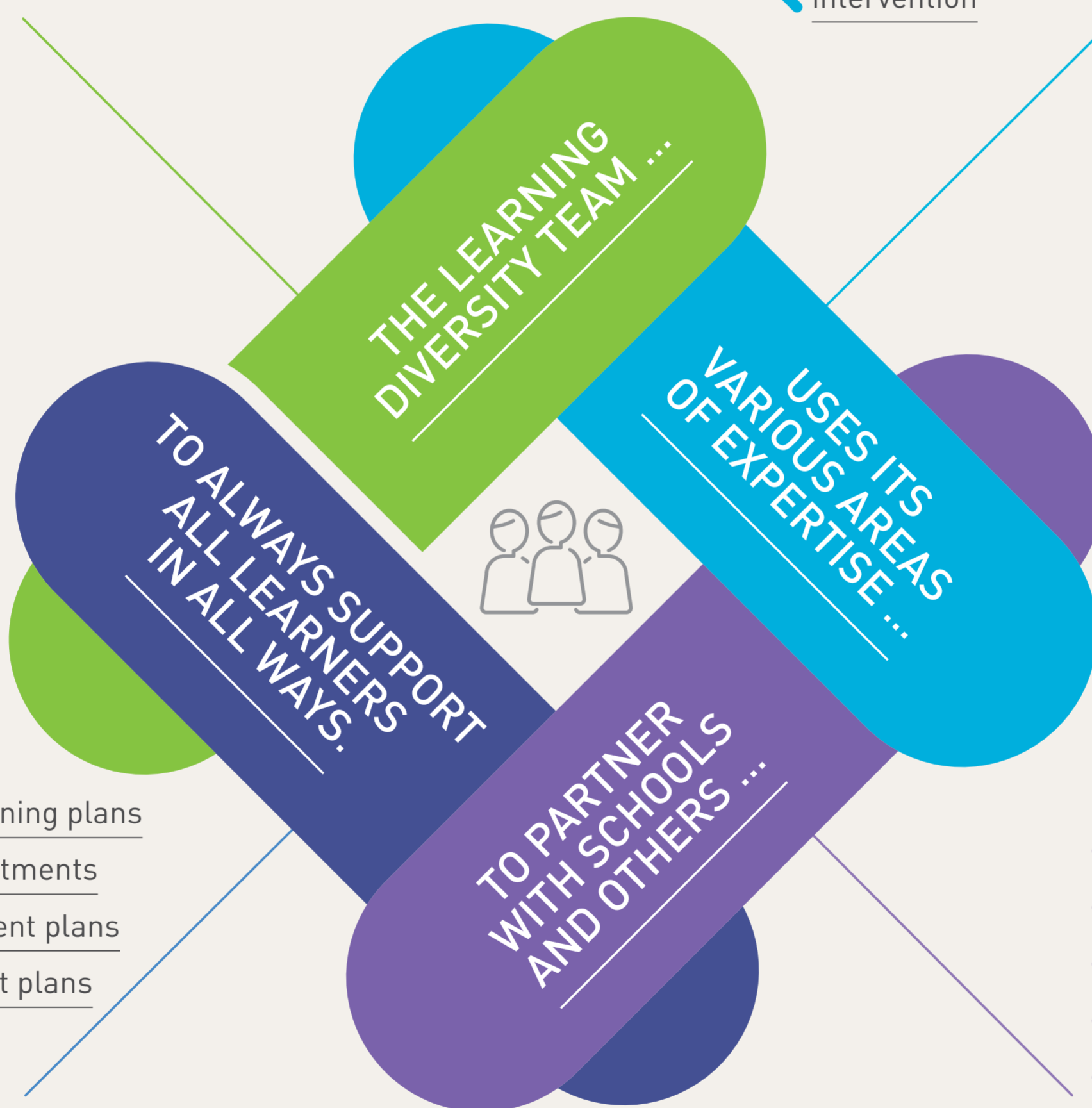
ALLWAYS

A GUIDE TO SUPPORTING **ALL LEARNERS IN ALL WAYS ALWAYS.**

HOW THE LEARNING DIVERSITY TEAM WORKS CLOSELY WITH SCHOOLS

- ✓ psychologists
- ✓ speech pathologists
- ✓ learning consultants
- ✓ education officers
- ✓ occupational therapists

- ✓ oral language and communication
- ✓ social and emotional wellbeing
- ✓ learning difficulties and disorders
- ✓ intervention
- ✓ autism
- ✓ positive behaviour support
- ✓ giftedness
- ✓ physical and chronic health concerns
- ✓ hearing and vision impairment
- ✓ Aboriginal and Torres Strait Islander student needs
- ✓ new arrivals and refugees
- ✓ English as an additional language



- ✓ personalised learning plans
- ✓ educational adjustments
- ✓ health management plans
- ✓ behaviour support plans
- ✓ safety plans
- ✓ risk assessments
- ✓ cultural safety plans
- ✓ program support group meetings
- ✓ assessments
- ✓ consultations

- ✓ schools
- ✓ school leaders
- ✓ teachers
- ✓ learning support officers
- ✓ parents
- ✓ universities
- ✓ external service providers
- ✓ community groups
- ✓ research institutes



Please contact your Learning Consultant – Diversity

at Melbourne Archdiocese Catholic Schools or one of the four regional offices for more information on supporting **all learners, in all ways, always.**